

Contents

Page

Technical characteristics Han® HsB	07.02
Han® 6 HsB	07.03
Han® 12 HsB	07.04

Features

- screw termination
- wire-protection included
- ideal for power supply applications
- termination with standard screw driver

Technical characteristics

Specifications	DIN EN 60 664-1 DIN EN 61 984
Approvals	SEV,

Inserts

Number of contacts	6, 12 (2 x 6), + PE
Electrical data	
acc. to EN 61 984	35 A 400/690 V 6 kV 3
Rated current	35 A
Rated voltage conductor - ground	400 V
Rated voltage conductor - conductor	690 V
Rated impulse voltage	6 kV
Pollution degree	3
or	35 A 500 V 6 kV 3
Rated voltage	
acc. to UL/CSA	600 V
Insulation resistance	$\geq 10^{10} \Omega$
Material	polycarbonate
Limiting temperatures	-40 °C ... +125 °C
Flammability acc. to UL 94	V 0
Mechanical working life	
- mating cycles	≥ 500

Contacts

Material	copper alloy
Surface	
- hard-silver plated	3 μm Ag
Contact resistance	$\leq 1 \text{ m}\Omega$
Screw terminal	
- Wire gauge ¹⁾	6 mm ²
- AWG	10
- Tightening torque	1.2 Nm

Hoods/Housings

Material	aluminium die-cast
Surface	powder-coated RAL 7037
Locking element	Han-Easy Lock®
Hoods/Housings sealing	NBR
Limiting temperatures	-40 °C ... +125 °C
Degree of protection acc. to DIN EN 60 529	
for coupled connector	IP 65
Further selection of hoods/housings see chapter 30 / chapter 31	

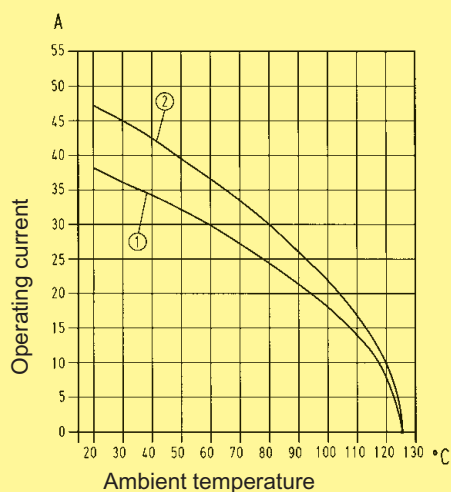
Accessories

Cable clamps	chapter 40
Coding of hoods/housings	chapter 40
Label acc. to CSA-approval	chapter 40
Han-Snap®	chapter 11

Current carrying capacity

The current carrying capacity of the connectors is limited by the thermal load capability of the contact element material including the connections and the insulating parts. The derating curve is therefore valid for currents which flow constantly (non-intermittent) through each contact element of the connector evenly, without exceeding the allowed maximum temperature.

Measuring and testing techniques according to
DIN EN 60 512-5

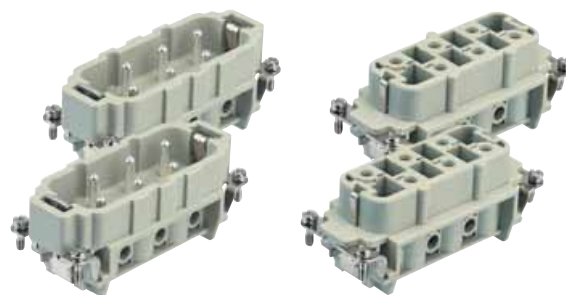


① wire gauge: 4 mm²

② wire gauge: 6 mm²

Number of contacts

12 +



Han
HsB

Identification	Series	Part number		Drawing	Dimensions in mm
		Male insert (M)	Female insert (F)		
Screw terminal	Han® HsB			<p>1) Distance for contact max. 21 mm</p> <p>Contact arrangement (view from termination side)</p> <p>Panel cut out for inserts for use without hoods/housings</p>	
		1-6 7-12	09 31 006 2601 09 31 006 2611		